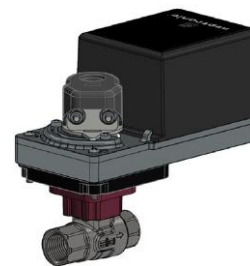


Models

B2AxxxxPP1: 2-way, 1/2" (DN15), female NPT
 B2BxxxxPP1: 2-way, 3/4" (DN20), female NPT
 B2CxxxxPP1: 2-way, 1" (DN25), female NPT
 B2DxxxxPP1: 2-way, 1 1/4" (DN32), female NPT
 B2ExxxxPP1: 2-way, 1 1/2" (DN40), female NPT
 B2FxxxxPP1: 2-way, 2" (DN50), female NPT



With B Series Actuators

Features

- 2-way valves available in 1/2" (DN15), 3/4" (DN20), 1" (DN25), 1 1/4" (DN32), 1 1/2" (DN40) and 2" (DN50)
- Compatible with Neptronic B series (50 in.lb [5.6 Nm]) and L series (140 in.lb [16 Nm]) actuators
- Small dimensions allow for easier installation
- Machined brass, equal-percentage characterized disc
- CV range from 0.3 to 230 (Kv 0.26 to 199)
- Control signal options include on/off, floating point or modulating (proportional)



With L Series Actuators

Models

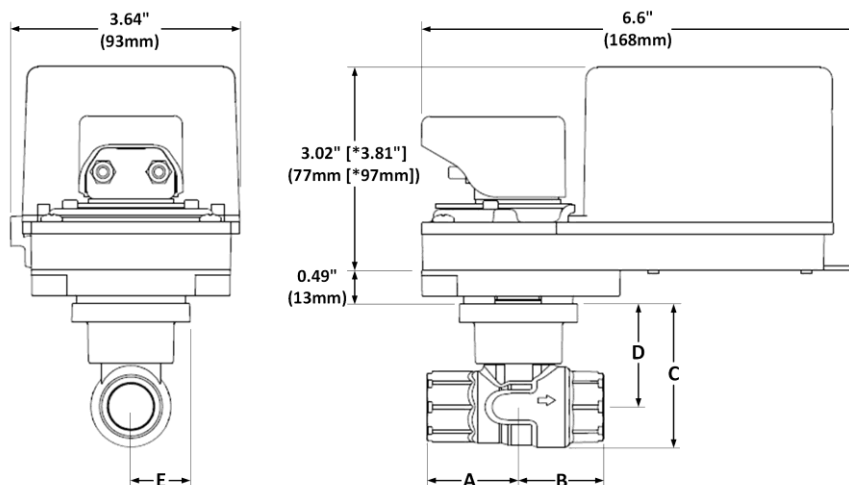
Size	2-Way Models	Cv	Kv	Size	2-Way Models	Cv	Kv
1/2" (DN15)	B2A0003PP1	0.3	0.26	1 1/4" (DN32)	B2D0100PP1	10	8.6
	B2A0005PP1	0.46	0.4		B2D0190PP1	19	16
	B2A0008PP1	0.8	0.7		B2D0250PP1	25	22
	B2A0012PP1	1.2	1		B2D0370PP1	37	32
	B2A0019PP1	1.9	1.64	1 1/2" (DN40)	B2E0190PP1	19	16
	B2A0030PP1	3	2.5		B2E0290PP1	29	25
	B2A0047PP1	4.7	4		B2E0370PP1	37	32
	B2A0074PP1	7.4	6.4		B2E0460PP1	46	40
	B2A0100PP1	10	8.6	2" (DN50)	B2F0290PP1	29	25
	B2A0160PP1	16	14		B2F0370PP1	37	32
3/4" (DN20)	B2B0047PP1	4.7	4		B2F0460PP1	46	40
	B2B0074PP1	7.4	6.4		B2F0570PP1	57	49
	B2B0100PP1	10	8.6		B2F0660PP1	66	57
	B2B0140PP1	14	12		B2F0850PP1	85	74
	B2B0240PP1	24	21		B2F1200PP1	120	104
1" (DN25)	B2C0074PP1	7.4	6.4		B2F2300PP1	230	199
	B2C0100PP1	10	8.6				
	B2C0190PP1	19	16				
	B2C0300PP1	30	26				

Technical Data

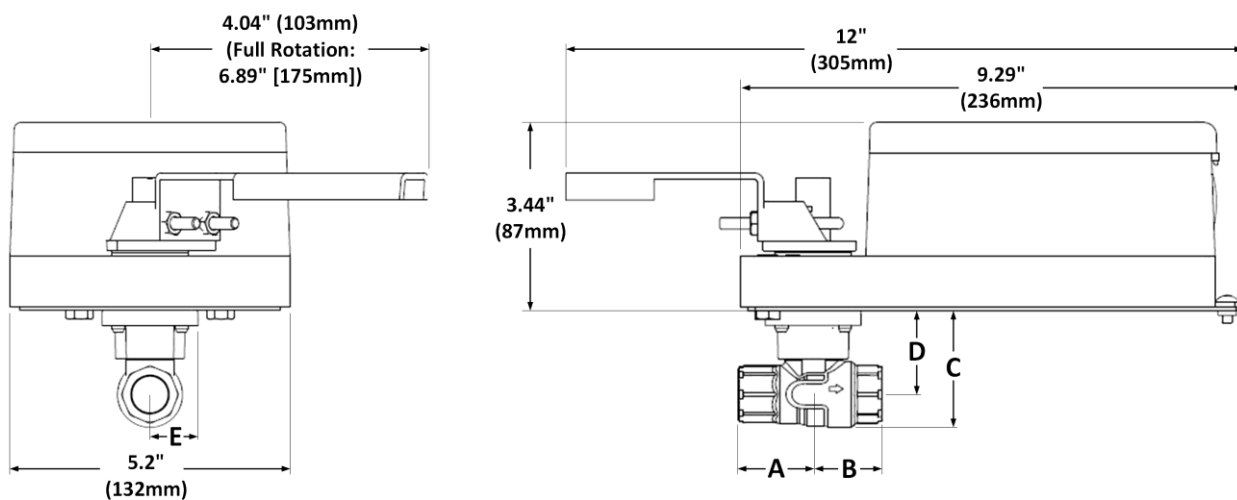
Specification			All Models
Actuator Compatibility			All Neptronic B and L series actuators
Sizes			1/2" to 2" [DN15 to DN50]
Range Cv [Kv]			0.3 to 230 [0.26 to 199]
Media Type			Water, Glycol 60%
Media Temperature Range			0°F to 250°F [-18°C to 120°C]
Pressure	Body	1/2" [DN15]	600 psi [4137 kPa]
		3/4" [DN20]	600 psi [4137 kPa]
		1" [DN25]	400 psi [2758 kPa]
		1-1/4" [DN32]	400 psi [2758 kPa]
		1-1/2" [DN40]	400 psi [2758 kPa]
		2" [DN50]	400 psi [2758 kPa]
	Close-Off		200 psi [1379 kPa]
	Differential		50 psi [345 kPa]
Leakage			0%
Materials	Body		Nickle-Plated Forged Brass
	Ball and Stem		Chrome Platted Brass
	Seats		PTFE
	Characterized Disc		Brass Characterized
	Stem O-Rings		EPDM
Flow Characteristic	A to AB		Equal Percentage
	Control Angle		75°
Flow Pattern			2-Way
Rangeability			100:1
Valve	Connection		EPDM

Dimensions

Mounted on B Series Actuators



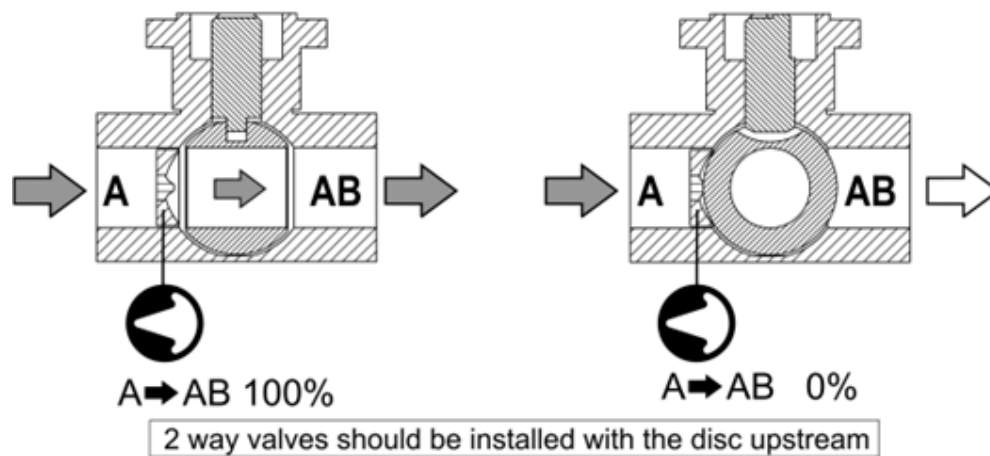
Mounted on L Series Actuators



Valve Size	1/2" [DN15]	3/4" [DN20]	1" [DN25]	1-1/4" [DN32]	1-1/2" [DN40]	2" [DN50]
A	1.38" [35mm]	1.53" [39mm]	1.89" [48mm]	2.15" [55mm]	2.18" [56mm]	2.76" [70mm]
B	1.28" [33mm]	1.48" [38mm]	1.89" [48mm]	2.01" [51mm]	2.20" [56mm]	2.76" [70mm]
C	2.13" [54mm]	2.46" [63mm]	2.81" [72mm]	3.40" [86mm]	3.40" [86mm]	4.48" [114mm]
D	1.53" [39mm]	1.69" [43mm]	1.87" [48mm]	2.20" [56mm]	2.20" [56mm]	2.73" [69mm]
E	0.89" [23mm]	0.89" [23mm]	0.94" [24mm]	1.20" [31mm]	1.20" [31mm]	1.75" [45mm]

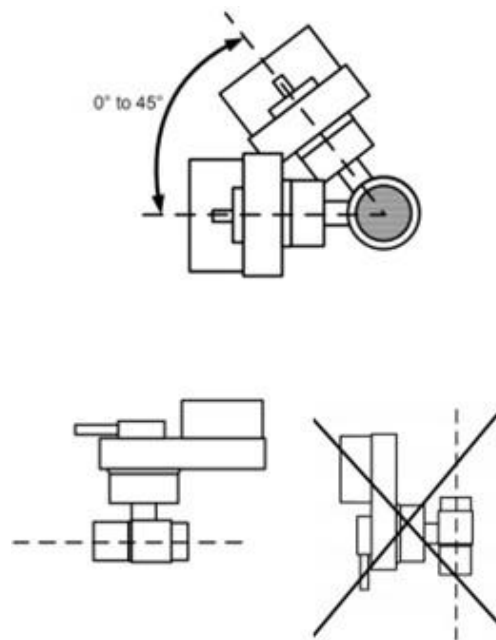
Note: These dimensions depend on the supplier and can be changed without any warning.

Mechanical Installation



Installation

The valve cannot be mounted vertically. If mounted horizontally the valve must be 0° to 45° off the horizontal line across the center of the pipe. Do not install with the actuator below pipe.



Recycling at end of life: please return this product to your Neptronic local distributor for recycling. If you need to find the nearest Neptronic authorized distributor, please consult www.neptronic.com.